



REXSON 63C106 Extrusion Pump

High Viscosity / Pumps



- Technology breakthrough
- Ergonomic design for increased productivity
- Cost reduction



Apply your Skills

www.sames-kremlin.com

Markets



REXSON 63C106 Extrusion Pump

The chop-check extrusion pump can handle most sealant & adhesive materials and can be pumped from the original containers (20 or 200 liters).



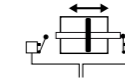
Technologies



Chevron Sealing



Chop Check



Switch Motor

SAMES KREMLIN offers a wide range of elevators, filters, regulators, follower plates, gun and hoses to suit your application needs.



Technical data table

Designation	Value	Unit: metric (US)
Pressure Ratio	63:1	
Maximum Fluid Pressure	378 (5482)	bar (psi)
Maximum Air Pressure	6 (87)	bar (psi)
Weighted Sound Level	5000	dB(A)
Fluid Volume per Cycle	106	cc
Free Flow Rate	6.3	l/mn (gal/mn)
Fluid Output at 15 cycles / mn	1.6	l/mn (gal/mn)
Air Consumption at 30 cycles/mn at 4 bar (60 psi)	66	m³/h (cfm)
Seal Packings	PTFE+PE	
Wetted Parts: Carbon Steel	•	
Air Inlet	F 3/4"G	
Fluid Outlet	F 3/4"G	
Fluid Inlet	Ø80	
Weight	30 (66)	kg (lbs)

Performance

- ◆ Optimal fluid passage hydraulic design for low shearing

Productivity

- ◆ Wide selection of follower plate sizes to fit a wide range of pails and drums
- ◆ Quiet air motor for better work conditions

Sustainability

- ◆ External valve accessibility for easy maintenance
- ◆ Wide selection of cartridges for easy replacement: PE, PE+PTFE, and PE+Leather



Description

